



i **HIGH** **STEEL**
STRUCTURES **INC.**
An Affiliate of High Industries Inc.

Fabrication and Market Overview

October 4, 2013

Company Overview

Fabrication Operations

Market Overview

Resources

Topics



Lancaster, PA Plant 1 Facility



Lancaster, PA Plant 2 facility

iHIGH
STEEL
STRUCTURES INC.
An Affiliate of High Industries Inc.



Williamsport, PA Plant 3 facility



Lancaster, PA Plant 4 facility



Fabrication – Receipt of material



Fabrication – Stacking of Slabs



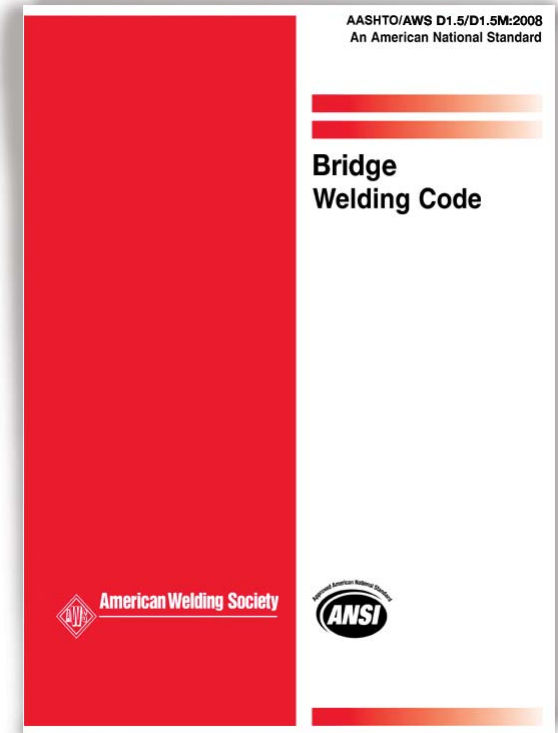
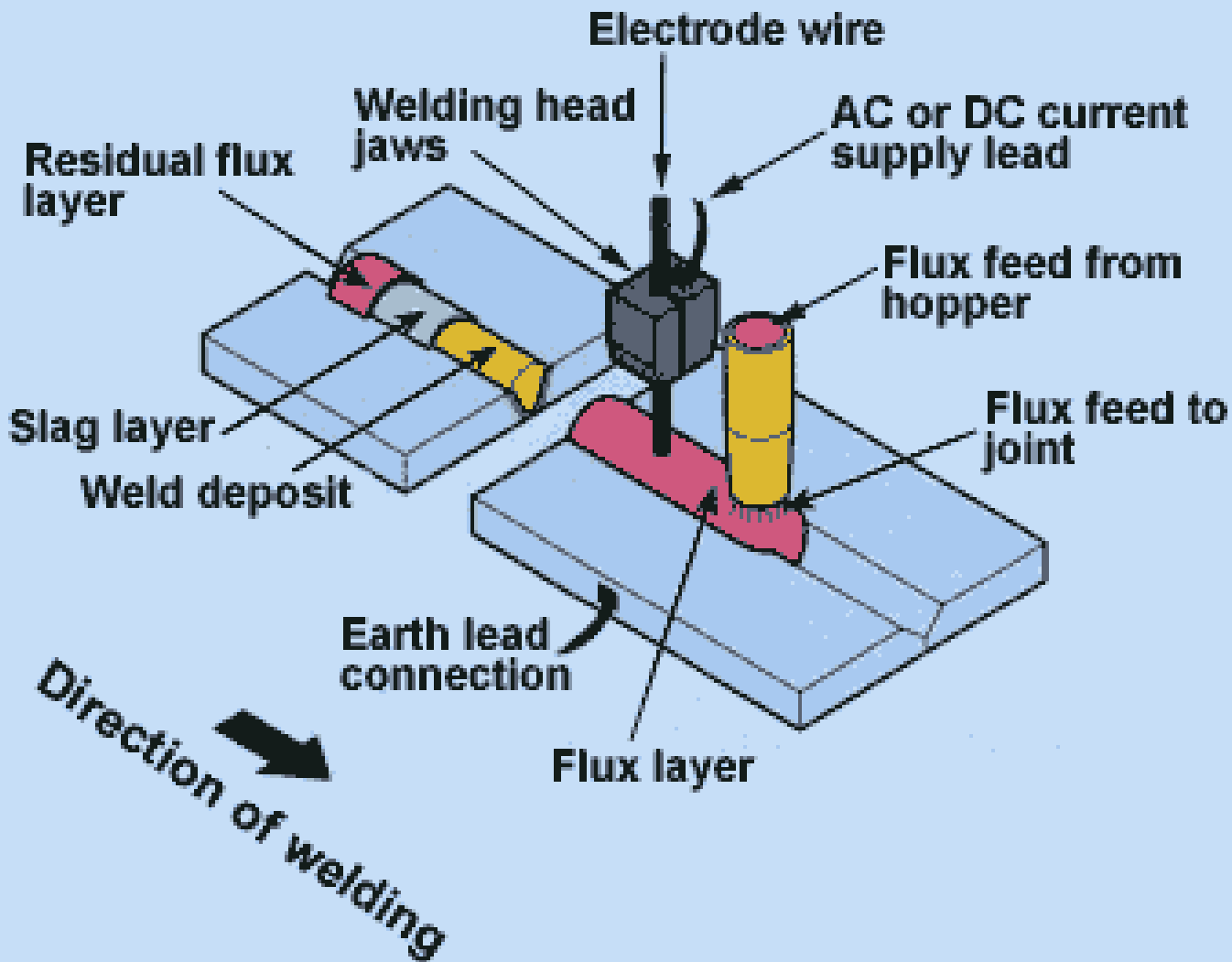
Fabrication – Moving Slabs to Burn Table



Fabrication – Burn Table

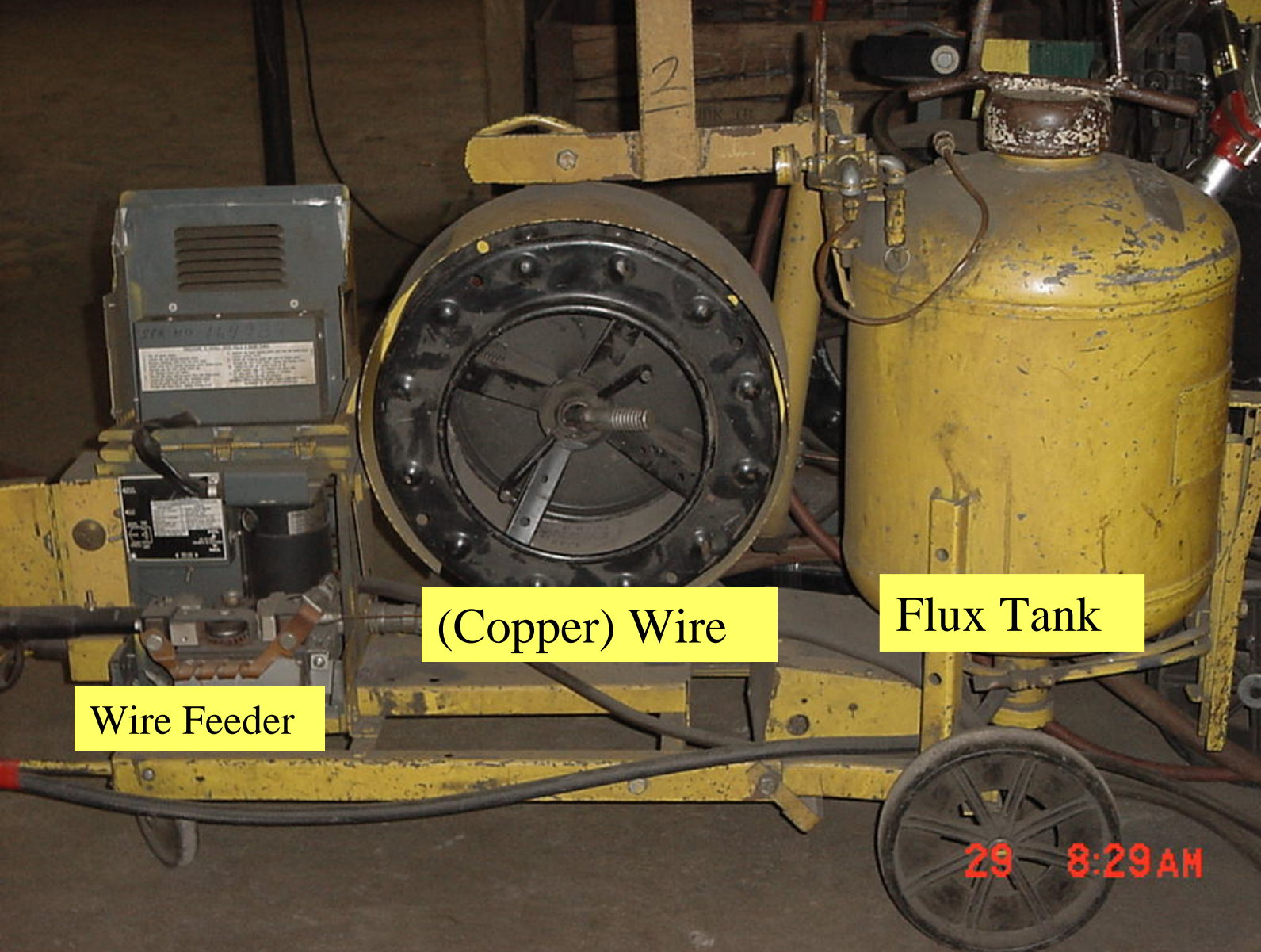


Fabrication – Burn Table



AASHTO/AWS D1.5

Fabrication – Submerged Arc Welding (SAW)



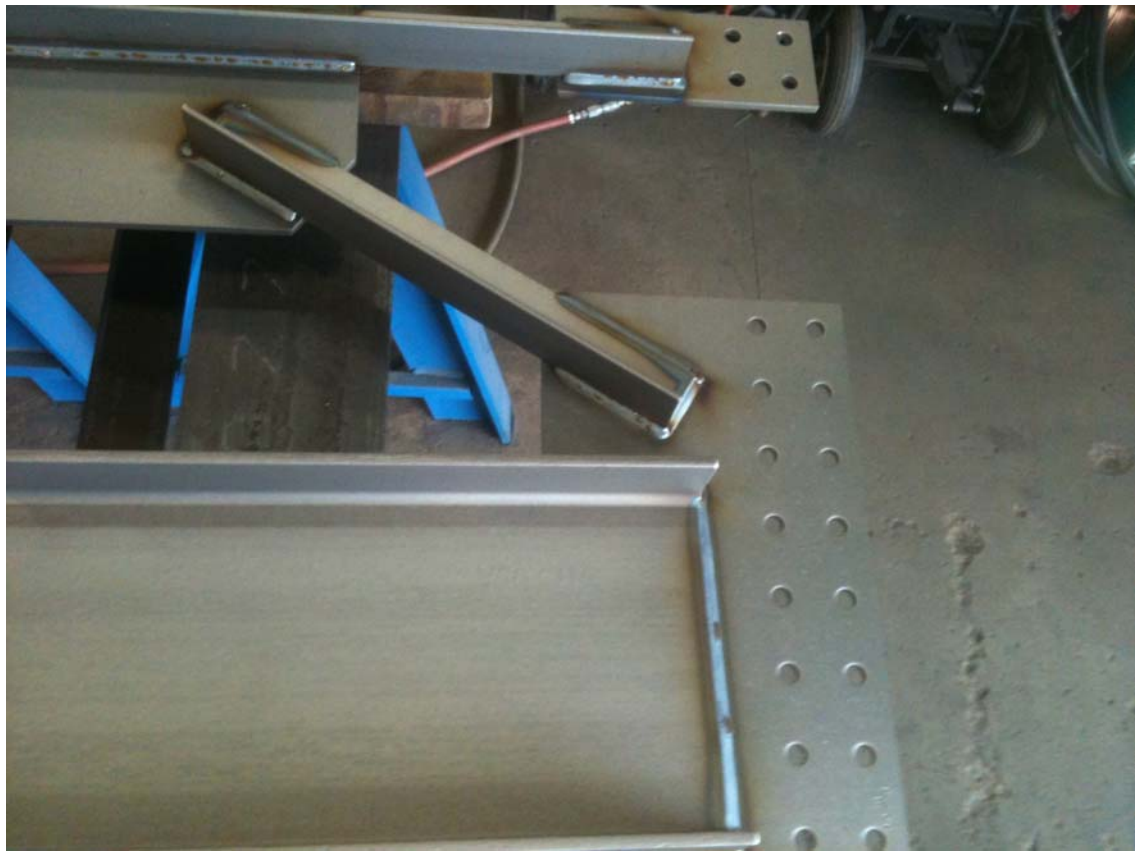
(Copper) Wire

Flux Tank

Wire Feeder

29 8:29 AM

Fabrication – Submerged Arc Welding (SAW)



**GMAW – Gas Metal Arc Welding.
Solid wire.**

Fabrication – Robotic Crossframe Welding



Fabrication – Electroslag Welding Process



**Vertical Rate of Rise = 2" / min.
Single Pass!**

**DOTs Permitted
CT, ME, MD,
OH, RI, VA and
VT.**

Fabrication – Electorslag Welding Process



Fabrication – Build Up of Member (Semi-Automated)



Fabrication – Welding of Member (Semi-Automated)



CNC Drilling — Holes for field splices



CNC Drilling



Fabrication – Inspection & Finishing

iHIGH
STEEL
STRUCTURES INC.
An Affiliate of High Industries Inc.



Fabrication – Girders ready for yard assembly



Assembly

iHIGH
STEEL
STRUCTURES INC.
An Affiliate of High Industries Inc.



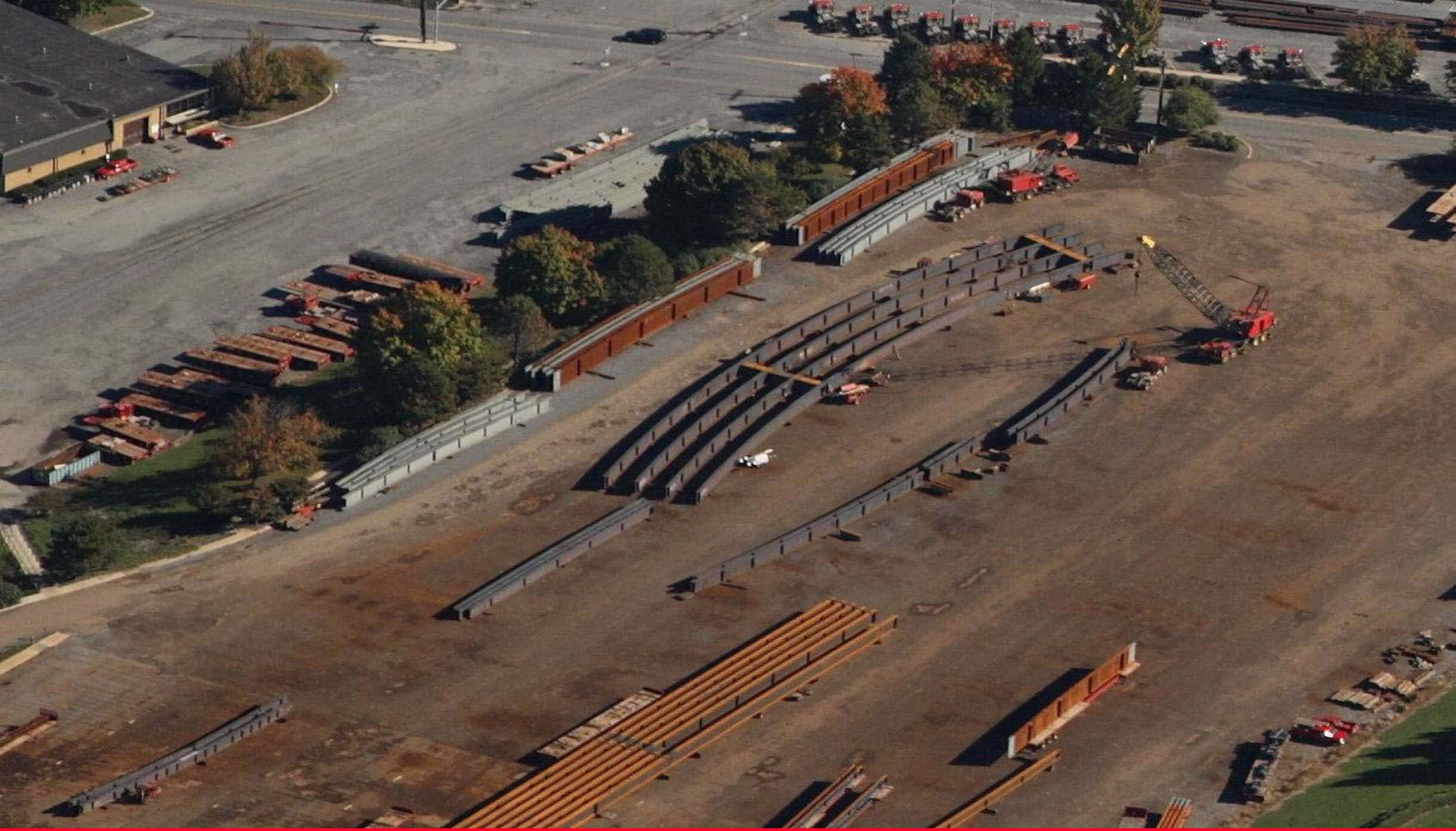
Assembly

iHIGH
STEEL
STRUCTURES INC.
An Affiliate of High Industries Inc.



Assembly

iHIGH
STEEL
STRUCTURES INC.
An Affiliate of High Industries Inc.



Assembly

iHIGH
STEEL
STRUCTURES INC.
An Affiliate of High Industries Inc.



Blasting

iHIGH
STEEL
STRUCTURES INC.
An Affiliate of High Industries Inc.

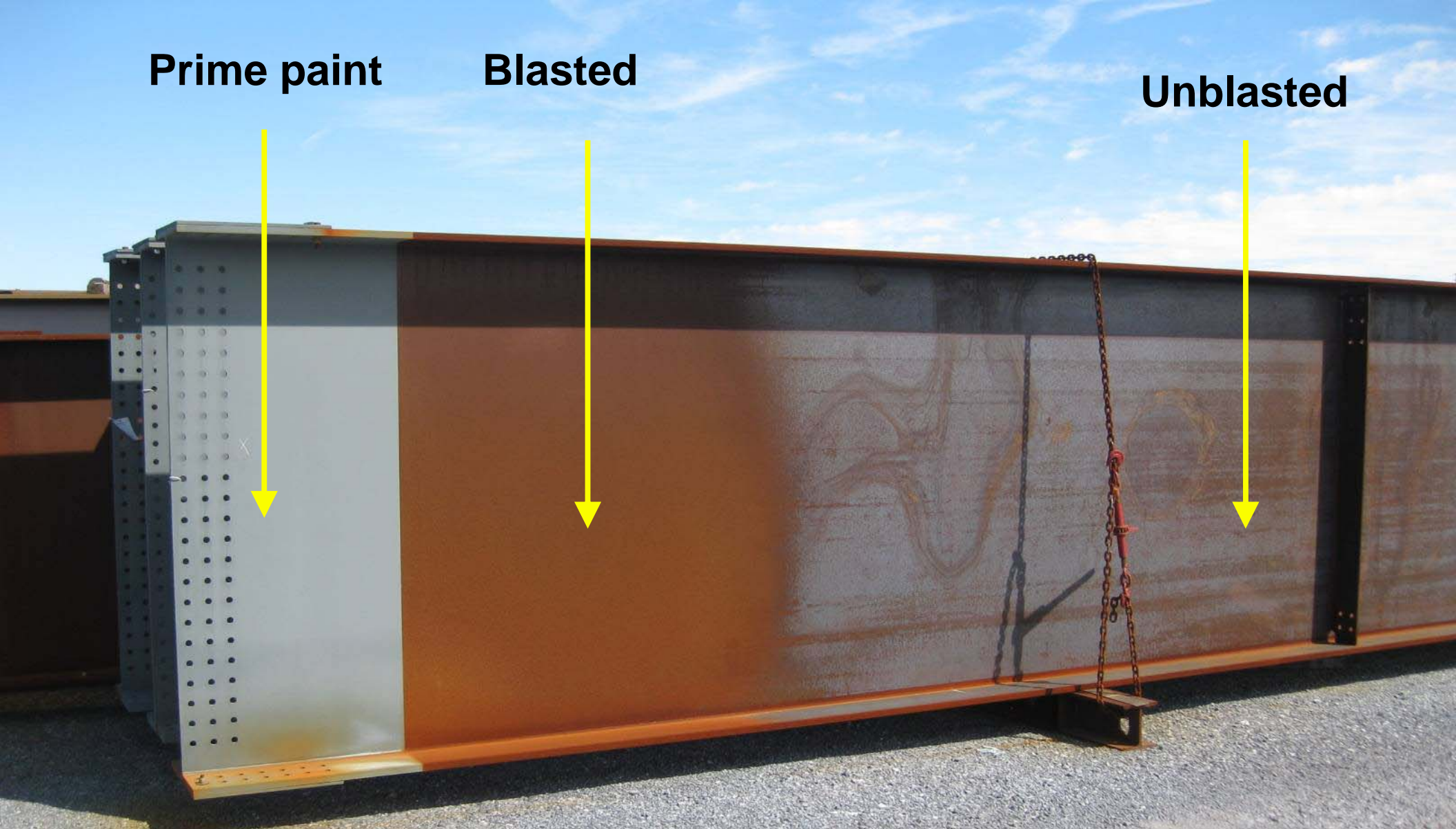


Painting — Standard 3 Coat IZEU system.

Prime paint

Blasted

Unblasted

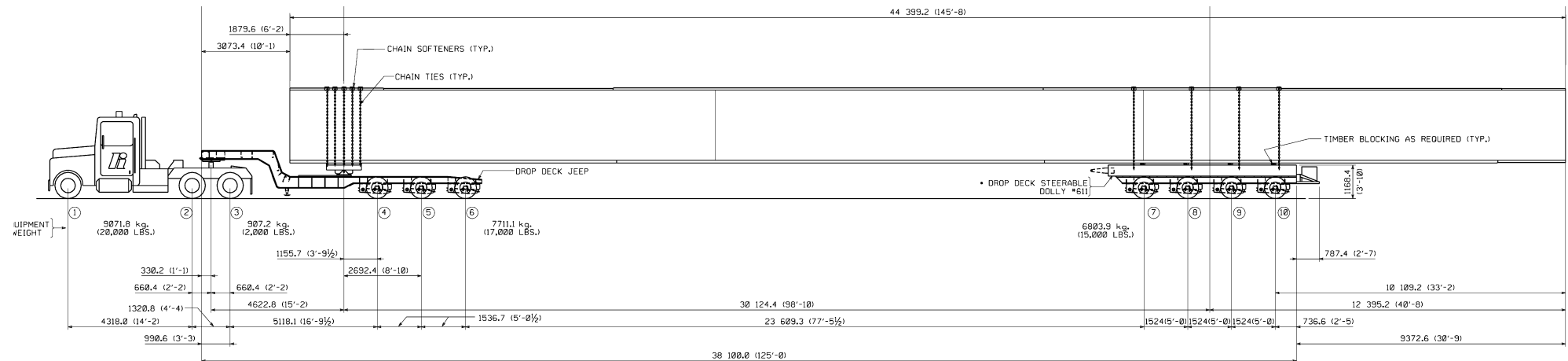


Partial Painting



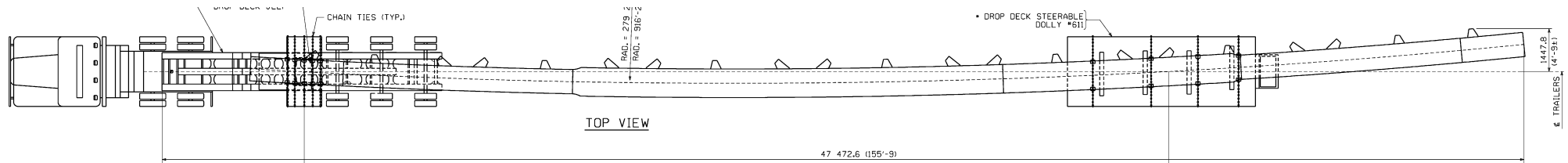
Storage

iHIGH
STEEL
STRUCTURES INC.
An Affiliate of High Industries Inc.



Shipping

Caution in locating bolted field splices for girders with Radius > 500'



Shipping – Shipping Procedure (Plan)



Shipping – Sweep!



124' L

10'-6 W

13'-6 H

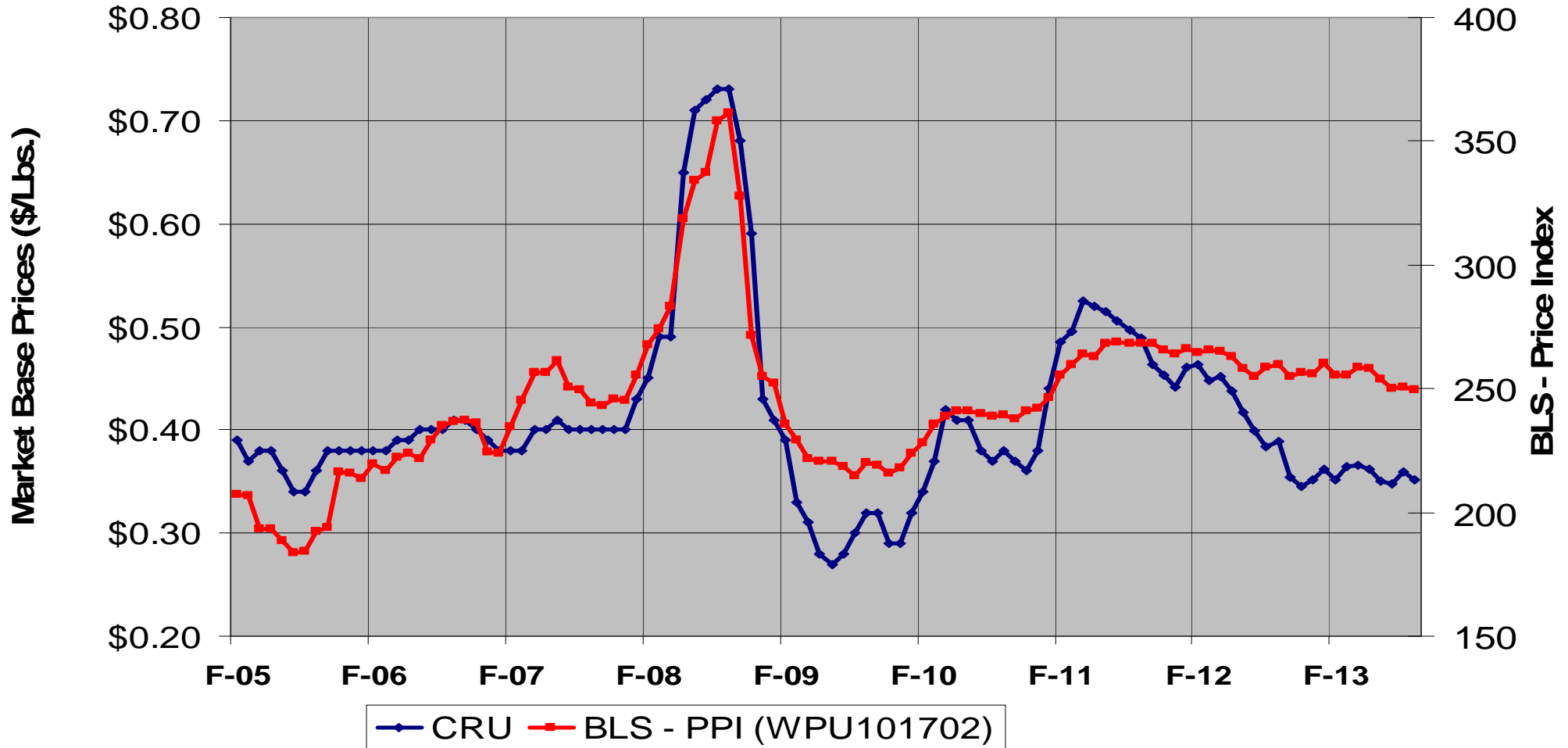
241,000#
GVW



High Transit, LLC (3rd Party Hauling)

IGH
STEEL
STRUCTURES INC.
An Affiliate of High Industries Inc.

Structural Steel Indices



Market

Market Prices for Structural Steel (2013 YTD)

State	Weight Bid in 2013 YTD (Tons)	Market Price Furnish, Fabricate and Deliver (Not Installed)
PA	11,324	\$1.47/Lbs.
NY	23,242	\$1.67/Lbs.
NJ	10,019	\$1.73/Lbs.
MD	1,628	\$1.65/Lbs.
VA	2,961	\$1.41/Lbs.
CT	4,362	\$1.64/Lbs.
OH	24,993	\$1.52/Lbs.
WV	2,447	\$1.27/Lbs.

Market Prices - Fabricated



Hot Dip Galvanizing: \$0.25/Lbs. - \$0.30/Lbs.

QC - Accumulation of Zinc in bolt holes.

Grinding of top flange for shear stud installation.

Market Prices - Coatings

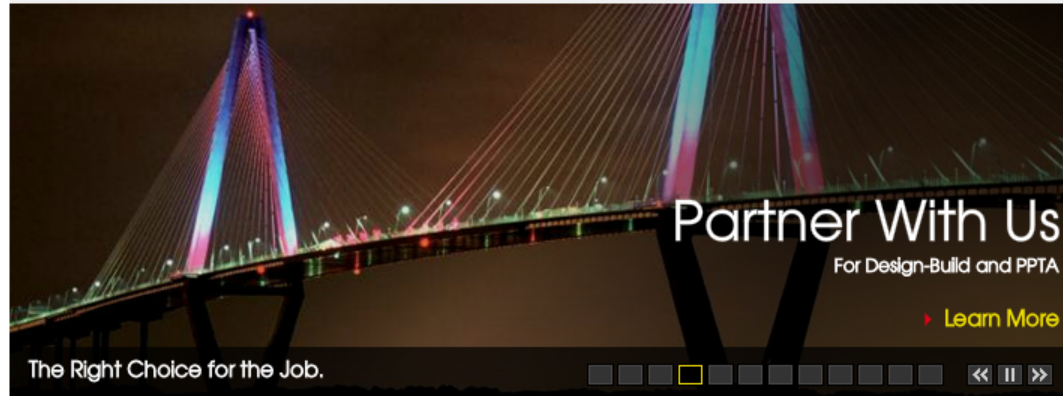


Metalizing – \$8.00 - \$9.00 per SFCA.

Market Prices



Field application of Metalizing



Steel Fabrication for Bridge



Steel Fabrication for Building & Industry

With more than one million tons of structural steel fabricated over the past 20 years, High Steel is proud of the quality reputation we've earned as the steel fabricator of choice for North America's transportation infrastructure projects. A leader in the industry for innovation, we have the capacity, technology and experience to help make your next steel bridge project a success. [Read More >](#)

From big city skyscrapers to clean energy projects, High Steel successfully partners with building and industrial steel fabricators on a variety of construction projects. With decades of experience specializing in steel girder fabrication, we can take on the most challenging weldments in your steel structure. Increase your next project's efficiency by working with us. [Read More >](#)

Designer's Tools

Have a question about steel design?

Need a budget price quote for your steel project?

Shipping concerns? We can help.

Spotlight



Featured Projects:

Lake Champlain Bridge

**Seven Lakes Drive
Emergency Replacement**

Latest News

High Steel Welcomes New President

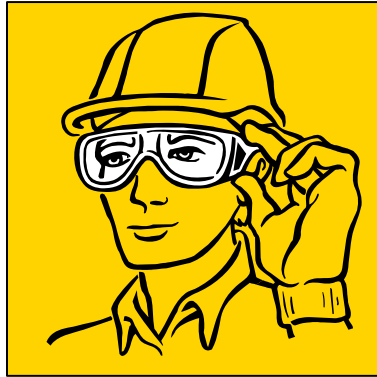
Request an Invitation to SteelDay 2013

High Steel Newsletter

Download our Brochure

During the shop tour you must wear:

- 1. Hard Hats**
- 2. Safety Glasses**
- 3. Ear Plugs (HSSI)**



- DO NOT TOUCH MATERIAL OR EQUIPMENT!**
- USE MAN DOORS IN LIEU OF OVERHEAD DOORS!**
- NO PHOTOS INSIDE FACILITIES PLEASE!**
- NO SMOKING ON PROPERTY.**

Safety

- **Lunch! 12:00 noon to 1:00 p.m.**
- **Shop Tours start at 1:15 p.m.**

**Travel to HSS Plant 1.
Use directions on the back cover of
your program handout.**

Next!